

# Chalet Grande Corniche

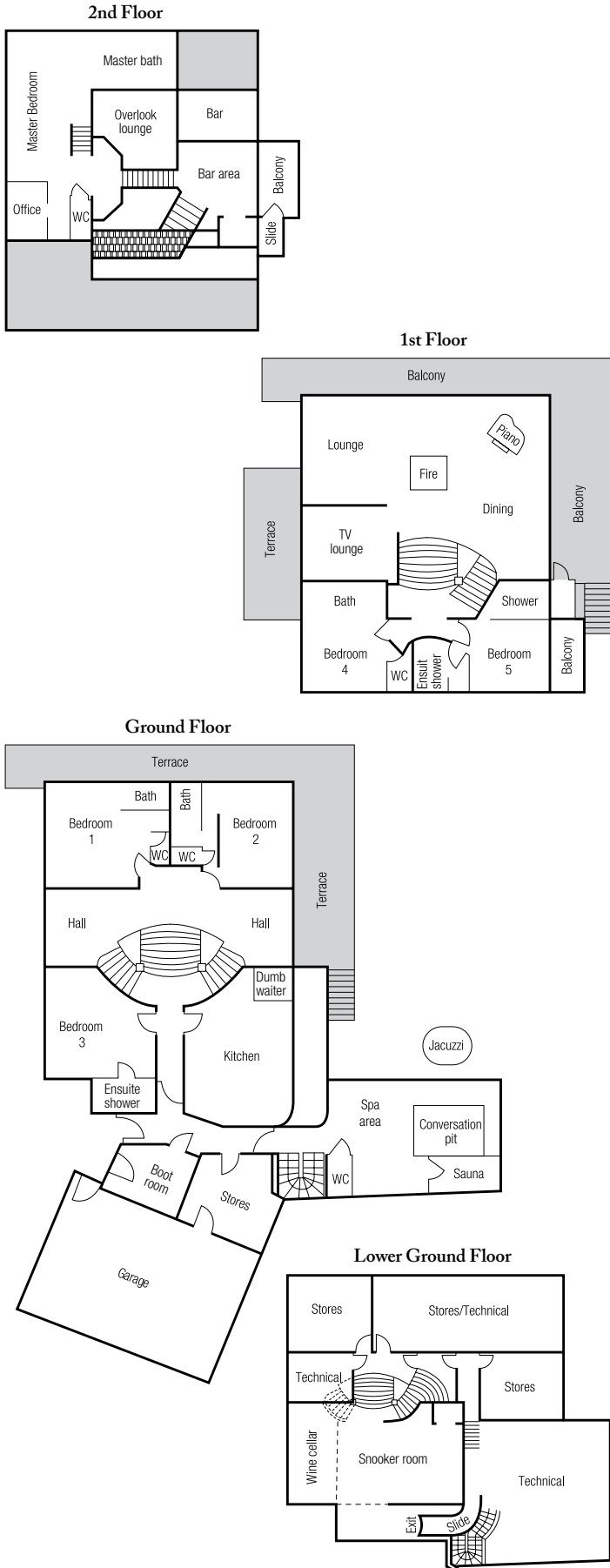
## *Les Gets*

Chalet: 12 Guests + Petit Corniche: 2 + 2 children



# Chalet Grande Corniche

Les Gets



## Accommodation

Maximum Guests: 12 in Chalet and 4 in Petit Corniche

Living Area: Approx 650m<sup>2</sup>

Staff: 5

### Bedroom 1

King-size double bed with ensuite bathroom. Plasma TV and south facing terrace.

### Bedroom 2

Twin or super-king bed with ensuite bathroom. Plasma TV and south facing terrace.

### Bedroom 3

Twin or super-king bed with ensuite shower room. Plasma TV.

### Bedroom 4

King-size double bed with ensuite bathroom room. Plasma TV.

### Bedroom 5

Twin or super-king double bed with ensuite shower room. Plasma TV and private balcony.

### Bedroom 6 - Master

King-size double bed with ensuite bathroom and shower. Office area, plasma TV and south facing balcony.

### Petit Corniche (additional charge)

Double or twin bedroom with shower room. Snug with Plasma TV, leading to mezzanine with twin beds plus kitchenette.

### Infant cots

Two of the bedrooms are suitable for cots.

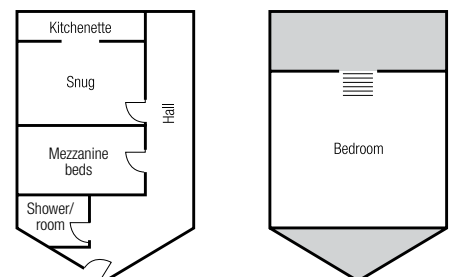
### Access

The chalet is only 5 minute's stroll from the town centre and a minute's chauffeured drive from the main lift hub.

### Facilities

- Outdoor Jacuzzi
- Large terrace
- Sauna and shower
- Conversation pit
- Snooker room – wine tasting vaulted cellar
- Grand Piano, self playing if required
- Ski room heated glove warmers and heated boot warmers
- Garage – 2 cars
- Privacy and 180 degree views
- Sonos music system, iPod docking station and Apple TV
- Wireless Internet
- TV in snug with sky plus Blu-ray/DVD player and Wii
- Guest computer
- Hairdryer in every room and slippers
- Luxury bathroom products
- Daily newspapers and magazines
- Fresh Flowers
- House wine, champagne (Perrier Jouët) and spirit list
- Toys, sledges, games and books
- In-resort chauffeured 4x4

### Petite Corniche



**Consensio**

9 Reece Mews  
South Kensington  
London SW7 3HE

T +44 (0)20 3393 0833  
sales@consensiochalets.co.uk  
www.consensiochalets.co.uk